



Contact: Erin Symington, Marketing Coordinator
Telephone: 310-768-0098 ext. 118
Email: Media@Maxpedition.com
Website: www.Maxpedition.com
SHOT Show Booth#: 20213

FOR IMMEDIATE RELEASE
January 14, 2015

MAXPEDITION® LAUNCHES ADVANCED GEAR RESEARCH AT SHOT SHOW 2016 New AGR™ Line Positioned to Set New Standards for Quality and Innovation

Los Angeles, CA, January 11, 2016 - Maxpedition corporation debuts the Advanced Gear Research (AGR) line with 12 new styles at SHOT Show 2016, providing a glimpse into the future of the Maxpedition brand and its products. While the Maxpedition brand DNA of uncompromising durability is preserved, modernized aesthetics and a broadened palette of custom materials and components, elevate Maxpedition equipment to a new level of quality, innovation, and sophistication.

“For AGR, we drilled down to every minute detail and developed many of the components and materials from scratch with world-class suppliers. It was extremely rewarding to create a set of finely crafted products with a combination of features & benefits not found anywhere else in the industry. I feel we are carving out a new niche of higher end carry equipment in the shooting/hunting/outdoor space similar to what we did once before in 2003 when I started the company,” says Tim C. Tang, President and Founder.

The newly released group of products are comprised of 6 main bags and 6 pouches. Pouches come standard with Maxpedition’s patent pending TacTie® Polymer Joining Clips for modular attachment. Product spec sheets attached with further details.

RIFTCORE™ Backpack
GRIDFLUX™ Sling Pack
WOLFSPUR™ Crossbody Shoulder Bag
EDGEPEAK™ Ambidextrous Sling Pack
IRONSTORM™ Adventure Travel Bag
IRONCLOUD™ Adventure Travel Bag

FRP™ First Response Pouch
DEP™ Daily Essentials Pouch
CAP™ Compact Admin Pouch
AUP™ Accordion Utility Pouch
PHP™ iPhone 6 Pouch
PLP™ iPhone 6 Plus Pouch

About MAXPEDITION

Founded in 2003, Maxpedition successfully optimized the design ethos of American military-grade MOLLE gear to suit the needs of everyday life and popularized its functionality to a global audience. Often imitated but never equaled, genuine Maxpedition gear is the benchmark against which others are compared, and it is trusted by special forces operators, law enforcement officers, adventure travelers and prepared citizens around the world. Now Maxpedition transcends the standards it set for the industry with the launch of AGR™.

< MORE >

MAXPEDITION®

Contact: Erin Symington, Marketing Coordinator
 Telephone: 310-768-0098 ext. 118
 Email: Media@Maxpedition.com



FOR IMMEDIATE RELEASE
 January 14, 2015



Model RFC

RIFTCORE™

Overall: 12 x 8 x 18 in | 30.5 x 20.3 x 45.7 cm
 Volume: 1400 cu in | 23 L



- Ergonomic backpack with quick release yoke-style straps
- Adjustable sternum strap
- Strap-down area in loop-lined middle compartment
- Stowable padded waist belt with gear loops
- Forward cinching waist belt adjustment
- Quadruple side compression
- Dual hydration ports
- Lockable main compartment
- Ample internal organization
- Custom molded fleece-lined rigid EVA pocket
- Two-way access to fully loop-lined rear CCW compartment
- Double-sided hook security strip included



< MORE >

MAXPEDITION®

Contact: Erin Symington, Marketing Coordinator
 Telephone: 310-768-0098 ext. 118
 Email: Media@Maxpedition.com



FOR IMMEDIATE RELEASE
 January 14, 2015



Model GRF

GRIDFLUX™

Overall: 12 x 9 x 18 in | 30.5 x 22.9 x 45.7 cm
 Volume: 1100 cu in | 18 L



- Sling pack with reinforced padded shoulder strap
- Stowable swiveling stabilizer strap
- Grab handle to swing pack from back to front
- Dedicated padded tablet compartment
- Lockable main compartment
- Ample internal organization
- Custom molded fleece-lined rigid EVA pocket
- Two locations for CCW placement
- Expandable water bottle pocket with dual zipper garages



< MORE >

Contact: Erin Symington, Marketing Coordinator
 Telephone: 310-768-0098 ext. 118
 Email: Media@Maxpedition.com

FOR IMMEDIATE RELEASE
 January 14, 2015



Model WLF

WOLFSPUR™

Overall: 11 x 7 x 13 in | 27.9 x 17.8 x 33.0 cm
 Volume: 670 cu in | 11 L



- Crossbody shoulder bag optimized for concealed carry
- Reinforced seatbelt webbing shoulder strap with quick release
- Excellent CCW access with 17 linear inches of zipper opening
- Fully loop-lined CCW compartment
- Oversized pull tab secured by double snaps
- Lockable main compartment sized to fit most tablets
- Custom molded fleece-lined rigid EVA pocket
- Expandable water bottle pocket with dual zipper garages
- Stowable adjustable waist belt
- Curved padded shoulder pad included
- Comfortable grab handle reinforced with bartacks



< MORE >

MAXPEDITION®



Contact: Erin Symington, Marketing Coordinator
 Telephone: 310-768-0098 ext. 118
 Email: Media@Maxpedition.com

FOR IMMEDIATE RELEASE
 January 14, 2015



Model EDP

EDGEPEAK™

Overall: 11 x 9 x 15 in | 27.9 x 22.9 x 38.1 cm
 Volume: 910 cu in | 15 L



- Fully ambidextrous sling pack
- Reinforced padded shoulder strap with swiveling stabilizer
- Lockable main compartment
- Dedicated padded tablet compartment
- Custom molded fleece-lined rigid EVA pocket
- Two-way access to fully loop-lined rear CCW compartment
- Double-sided hook security strip included



< MORE >

MAXPEDITION®

Contact: Erin Symington, Marketing Coordinator
Telephone: 310-768-0098 ext. 118
Email: Media@Maxpedition.com



FOR IMMEDIATE RELEASE
January 14, 2015

1 Adventure travel bag with stowable yoke backpack straps

2 Multiple handles for carrying & luggage maneuvering



3 Dedicated padded 15" laptop compartment

4 Lockable padded main compartment



1



2



3



4

Model RSM

IRONSTORM™

Overall: 15 x 11 x 26 in | 38.1 x 27.9 x 66.0 cm
Volume: 3780 cu in | 62 L

RSMBLK
Black

RSMGRY
Gray

RSMTAN
Tan

- Adventure travel bag with stowable yoke backpack straps
- Multiple handles for carrying & luggage maneuvering
- Removable single shoulder strap with overbuilt swivel hooks
- Dedicated padded 15" laptop compartment
- Dedicated padded tablet compartment
- Lockable padded main compartment
- Internal compression bib for securing contents
- Zip-up dividers in main compartment for improved organization
- Quick access slip pocket with zipper garage



< MORE >

MAXPEDITION®

Contact: Erin Symington, Marketing Coordinator
 Telephone: 310-768-0098 ext. 118
 Email: Media@Maxpedition.com



FOR IMMEDIATE RELEASE
 January 14, 2015

1 Airline carry-on size*
 adventure travel bag

2 Multiple handles for
 carrying & luggage
 maneuvering



3 Stowable yoke
 backpack straps

4 Lockable padded
 main compartment



1



2



3



4

Model RCD

IRONCLOUD™

Overall: 14 x 10 x 22 in | 35.6 x 25.4 x 55.9 cm
 Volume: 2930 cu in | 48 L



- Airline carry-on size* adventure travel bag
- Stowable yoke backpack straps
- Multiple handles for carrying & luggage maneuvering
- Removable single shoulder strap with overbuilt swivel hooks
- Dedicated padded 15" laptop compartment
- Dedicated padded tablet compartment
- Lockable padded main compartment
- Internal compression bib for securing contents
- Quick access slip pocket with zipper garage

*Check with your airline for specific requirements



< MORE >

MAXPEDITION®

Contact: Erin Symington, Marketing Coordinator
Telephone: 310-768-0098 ext. 118
Email: Media@Maxpedition.com



FOR IMMEDIATE RELEASE
January 14, 2015

1 Low-profile when empty yet expands to fit mission critical items

2 Narrow footprint ideal for frontal placement on chest rig



3 Interior elastic loops and pockets provide organization

4 Two (2) TacTie PJC5 polymer joining clips included for modular attachment



Model CAP

CAP™

COMPACT ADMIN POUCH

Overall: 5 x 2.5 x 7.5 in | 12.7 x 6.4 x 19.1 cm

CAPBLK
Black

CAPGRY
Gray

CAPTAN
Tan

- Low-profile when empty yet expands to fit mission critical items
- Narrow footprint ideal for frontal placement on chest rig
- Interior elastic loops and pockets provide organization
- Exterior mounting surface for adding a small pouch
- Top carry handle with D-rings
- Bottom drainage grommets
- Two (2) TacTie® PJC5 polymer joining clips included for modular attachment



< MORE >

1 Updated interpretation of the traditional blow-out medical pouch

2 Two (2) TacTie PJC5 polymer joining clips included for modular attachment



3 Interior paracord adjuster to set the exact angle of opening

4 Interior elastic straps and pockets for retention & organization



1



2



3



4

Model FRP

FRP™

FIRST RESPONSE POUCH

Overall: 6 x 2.5 x 9 in | 15.2 x 6.4 x 22.9 cm

FRPBLK
Black

FRPGRY
Gray

FRPTAN
Tan

- Updated interpretation of the traditional blow-out medical pouch
- Dual zippered full-length opening
- Interior paracord adjuster to set the exact angle of opening
- Interior elastic straps and pockets for retention & organization
- Exterior mounting surface for adding a small pouch
- Frontal 2" x 3.5" loop field for patch adhesion
- Top carry handle with D-rings
- Bottom drainage grommet
- Two (2) TacTie® PJC5 polymer joining clips included for modular attachment



Contact: Erin Symington, Marketing Coordinator
 Telephone: 310-768-0098 ext. 118
 Email: Media@Maxpedition.com

FOR IMMEDIATE RELEASE
 January 14, 2015



Model DEP

DEP™

DAILY ESSENTIALS POUCH

Overall: 5.5 x 2.5 x 8 in | 14.0 x 6.4 x 20.3 cm



- Two-compartment pouch designed for everyday carry
- Sized to wear on a belt or to attach to the side of a pack
- Main zippered compartment fits necessities plus a large cellphone
- Frontal zippered compartment with elastic organization
- Exterior mounting surface for adding a small pouch
- Frontal 2" x 3.5" loop field for patch adhesion
- Top carry handle with D-rings
- Bottom drainage grommets
- Two (2) TacTie® PJC5 polymer joining clips included for modular attachment





Model AUP

AUP™

ACCORDION UTILITY POUCH

Overall: 6.5 x 3 x 7.5 in | 16.5 x 7.6 x 19.1 cm



- Main zippered compartment with accordion-style dividers
- Frontal zippered compartment with elastic organization
- Exterior mounting surface for adding a small pouch
- Top carry handle with D-rings
- Bottom drainage grommets
- Two (2) TacTie® PJC5 polymer joining clips included for modular attachment



MAXPEDITION®

Contact: Erin Symington, Marketing Coordinator
 Telephone: 310-768-0098 ext. 118
 Email: Media@Maxpedition.com



FOR IMMEDIATE RELEASE
 January 14, 2015

1 Lightly padded, felt loop-lined cases

2 Sized to fit the Apple iPhone 6



3 One (1) TacTie PJC3 polymer joining clip included for modular or belt attachment

4 one finger molded zipper pullers



1



2



3



4

Model PHP

PHP™

iPhone 6 POUCH

Overall: 3.5 x 1 x 7 in | 8.9 x 2.5 x 17.8 cm

PHPBLK
Black

PHPGRY
Gray

PHPTAN
Tan

- Lightly padded, felt loop-lined cases
- Sized to fit the Apple iPhone 6 and iPhone 6 Plus*
- One (1) TacTie® PJC3 polymer joining clip included for modular or belt attachment

*Apple & iPhone are trademarks of Apple Inc.



< MORE >

MAXPEDITION®

Contact: Erin Symington, Marketing Coordinator
 Telephone: 310-768-0098 ext. 118
 Email: Media@Maxpedition.com



FOR IMMEDIATE RELEASE
 January 14, 2015



Model PLP

PLP™

iPhone 6 PLUS POUCH

Overall: 4 x 1 x 7.5 in | 10.2 x 2.5 x 19.1 cm

- PLPBLK**
Black
- PLPGRY**
Gray
- PLPTAN**
Tan

- Lightly padded, felt loop-lined cases
- Sized to fit the Apple iPhone 6 and iPhone 6 Plus*
- One (1) TacTie® PJC3 polymer joining clip included for modular or belt attachment

*Apple & iPhone are trademarks of Apple Inc.



< MORE >

FEATURES



YKK® Zippers with Positive Grip Pulls



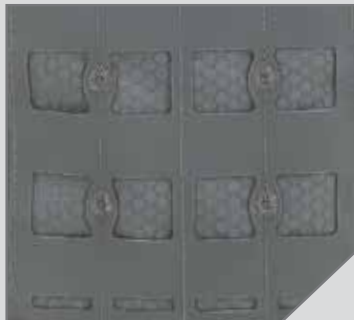
Expandable Bottle Holder with Dual Zipper Garages



TacTie® Polymer Joining Clips
U.S. and Int'l Patents Pending



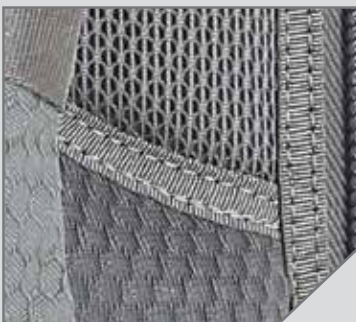
Dual Nylon Fabric Construction
500D Hex Ripstop / 1000D Plainweave



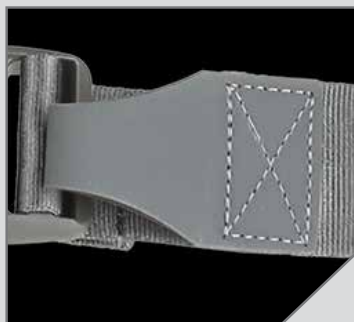
Modular Attachment Lattice - Patent Pending
Cut from 840D Nylon-TPU Composite



CCW Compartment with Double Security Closure



Bi-Level High Grade 3D Airmesh Backings



840D Nylon-TPU Composite Tapered Pull
Loops



Custom Fabricated Shapeshift™ Webbing
Loops



Custom Molded Fleece-Lined Rigid EVA Pocket



Oversized Curvilinear CCW Compartment
Opening



Reinforced Yoke Backpack Straps

FEATURES



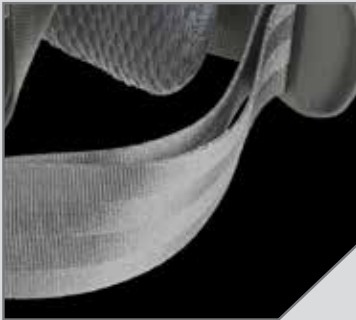
Very Visible Grayscale Interior



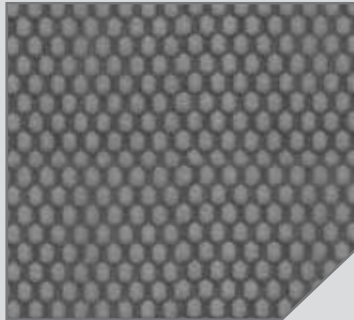
Lightweight Anti-Break Duraflex® Xlite® Buckles



Heavy Duty Swivel Hook



Skin Friendly Nylon Seatbelt Webbing



Fray-Resistant Gossamer™ Mesh



Refined Construction with Elegant Inlays



Circular Reinforcement Bartacks



38mm-25mm Transitional Nylon Seatbelt Webbing



500D Hex Ripstop Nylon Fabric with Teflon® Coating



Anti-counterfeit Logo Embossed 420D Nylon Liner



TPU-840D Pierced Nylon Composite Drainage Port



TPU-840D Nylon Composite Attachment Backing